

DELAWARE CREEK

In 2011 the City of Irving hired the engineering firm Freese & Nichols to do the Delaware Creek Channel Improvements Alignment Study. This study was concluded in 2015. The study can be seen at [Delaware Creek Study](#).

The proposed channel, bridge and culvert improvements result in lowering the existing 100-year floodplain elevations from approximately 1 to 5 feet through the project reach and removing approximately 6 of the existing roadways from being overtopped by the 100-year floodplain. At the conclusion of the project a number of homes will be removed from the 100-year flood plain. The total project cost is estimated at approximately \$11,811,000 which included \$2.3 million of sanitary sewer main improvements.



0 500 1,000
Feet

September 10, 2019

183
TEXAS

356
TEXAS

STORY

GRAUWYLER

MACARTHUR

O'CONNOR

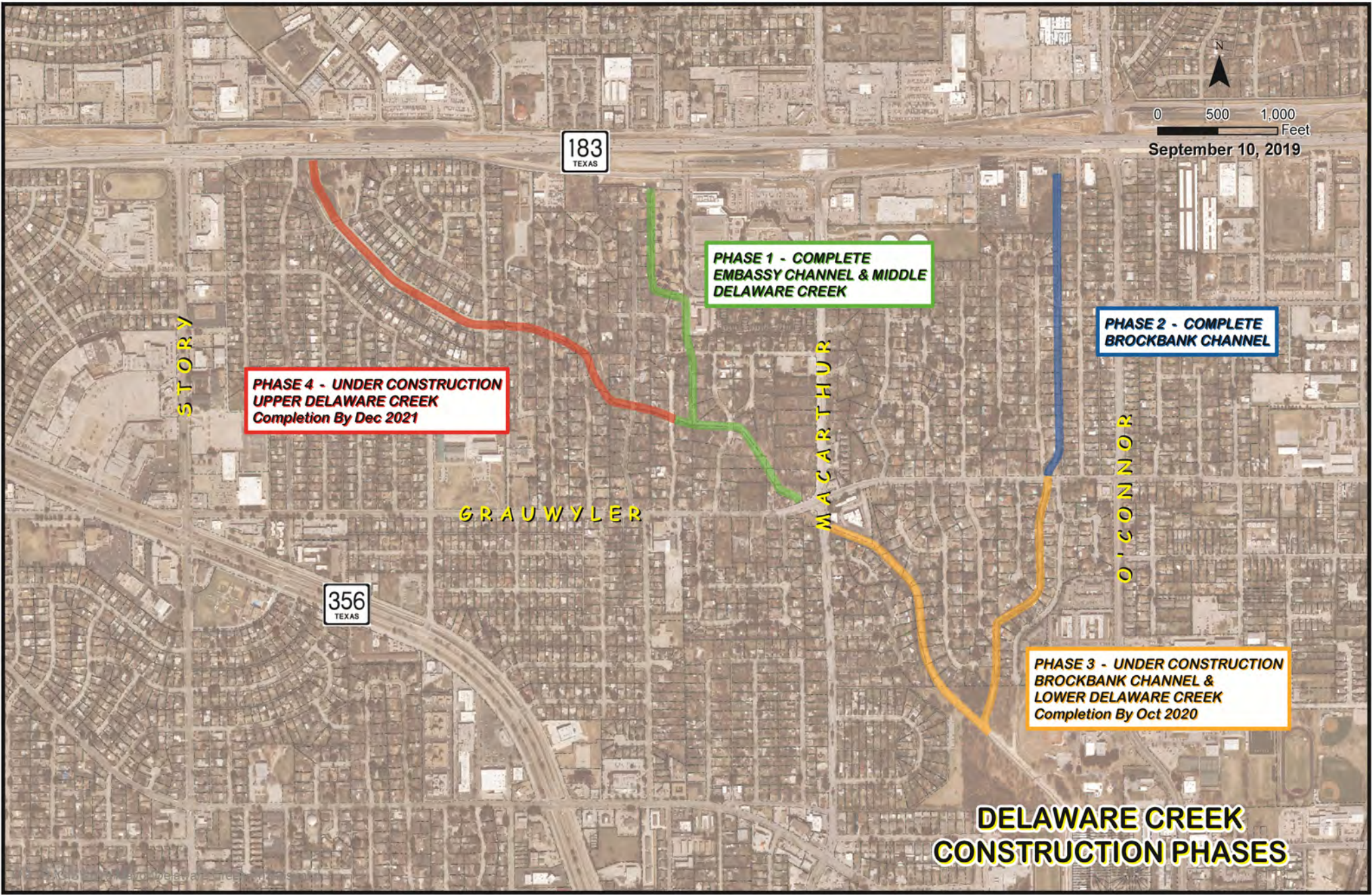
PHASE 4 - UNDER CONSTRUCTION
UPPER DELAWARE CREEK
Completion By Dec 2021

PHASE 1 - COMPLETE
EMBASSY CHANNEL & MIDDLE
DELAWARE CREEK

PHASE 2 - COMPLETE
BROCKBANK CHANNEL

PHASE 3 - UNDER CONSTRUCTION
BROCKBANK CHANNEL &
LOWER DELAWARE CREEK
Completion By Oct 2020

DELAWARE CREEK
CONSTRUCTION PHASES



UPPER DELAWARE CREEK

This project includes removal and replacement of the 6 road bridges and 3 pedestrian bridges over Delaware Creek along with the installation of 81,050 square feet of modular block face retaining walls and 10,650 square yards of reinforced concrete channel lining for channel improvements, 4,535 linear feet of 36" to 42" wastewater pipe, 960 linear feet of 6" to 8" wastewater pipe, and the lowering of 705 linear feet of 8" to 20" water main.

Contractor: Austin Filter Systems, Inc.
Notice to Proceed: 07/08/2019

Contract: \$21,517,972.00
Project Time: 900 Calendar Days

LOWER DELAWARE CREEK & BROCKBANK CHANNEL PH 2

These two section were bid as one project. This project includes installation of 47,090 square feet of modular block face retaining wall, 17,140 square yards of reinforced concrete channel lining, 18,670 square feet of soil nail walls, 30,165 square feet of cast in place concrete retaining walls along with 1,555 linear feet of 8-inch PVC wastewater main.

Contractor: Humphrey & Morton Construction, Inc
Notice to Proceed: 12/26/2018

Contract: \$14,164,354.80
Project Time: 660 Calendar Days